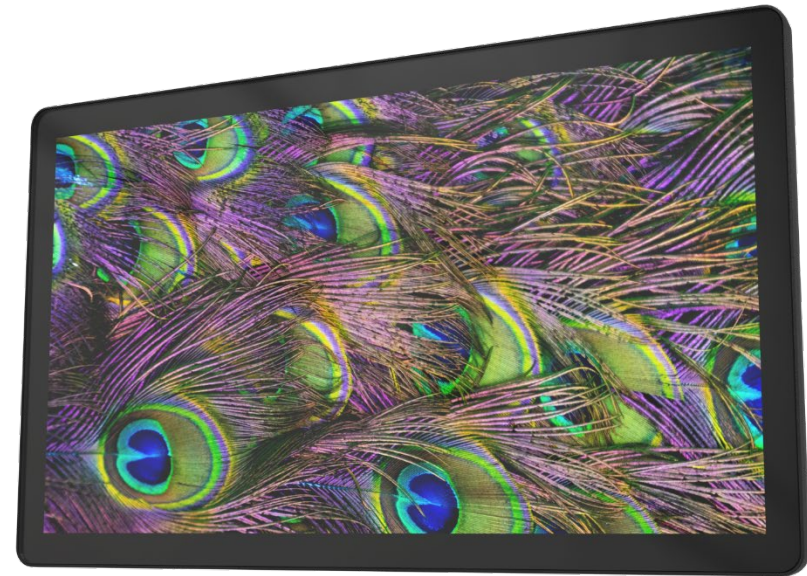


### INFLEX 156

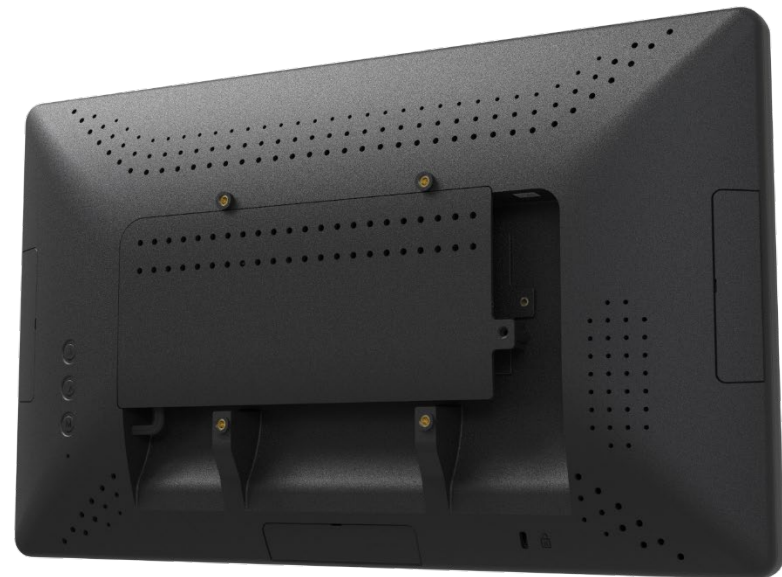
#### FEATURES

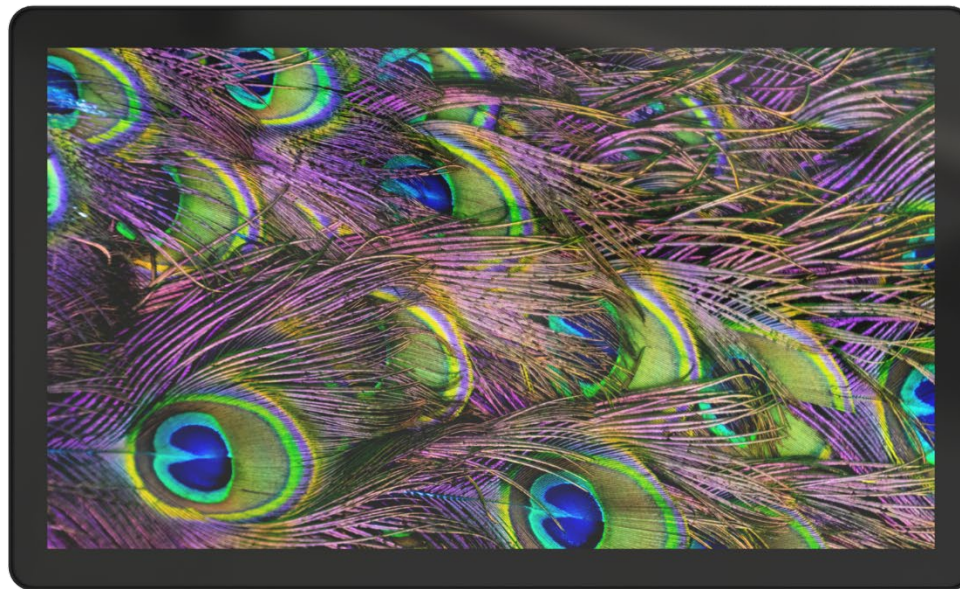
- ▶ Hardened antiglare glass for easy cleaning optically bonded
- ▶ VESA 100 by 100 M4
- ▶ Lightweight plastic chassis construction
- ▶ 10 point PCAP touch
- ▶ PTD "USB-C Power To Device" feature
- ▶ Slot for Lenovo Chrome Box Micro
- ▶ Full USB-C in/out port
- ▶ 3 x USB-Micro slots for accessories

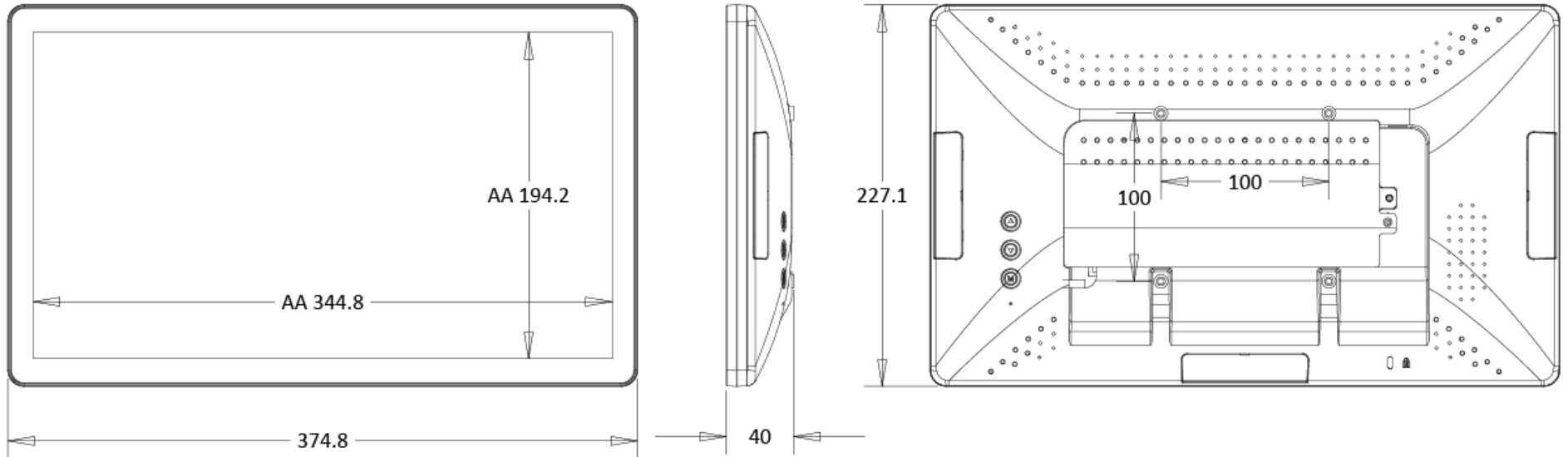


#### GENERAL SPECS

Resolution	FHD 1920 x 1080 pixels
Viewing angle	89/89/89/89 degrees
Brightness	350 cd/m2
Video input	USB-C/DP DP HDMI 1.4
Data input/output	USB-C/USB-A
OSD	Full button OSD
Shipping dimensions	TBD
Unit color	Black







### MONITOR SPECS

Display size	15.6 inch
View area	344.8. x 194.2
Touch technology	PCAP
Ppi	0.179 x 0.179 mm
Aspect ratio	16:9
Resolution	FHD 1920 x 1080 pixels
Response time	25 ms
View angle	89/89/89/89 degrees
Color support	16.7 M
Refresh rate	60 Hz
Brightness	350 cd/m2
Contrast ratio	3000:1
Protective glass	Hardened Anti Glare
LED lifetime	30 000 h

### UNIT SPECS

Touch interface	10 Point PCAP 10 ms response
Power consumption	60 W (45 W passthru)
Power input	12V 6A
Unit dimensions	378.4 x 227.1 x 40 mm
Unit weight	TBD 1.1 kg
Operating temp.	0°C to 50°C / 32°F to 122°F
Operating humidity	20% to 90%, relative
Mounting options	VESA 100 by 100
Shipping dimensions	TBD
Shipping weight	Approx. 1.2 kg
Storage temp.	-20°C to 60°C / -4°F to 140°F
Storage humidity	5% to 90%, relative

### IN THE BOX

Unit	inFLEX156
Video cables	HDMI
Touch cables	USB-A
Power supply	Power brick Barrel 5.5 2.1

### WARRANTY

Standard	1-year return to depot
Extended	Optional

### CERTIFICATIONS

Unit	CE, FCC, ROHS
Power supply	CE, FCC, ROHS, UL

